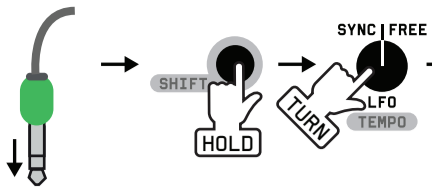


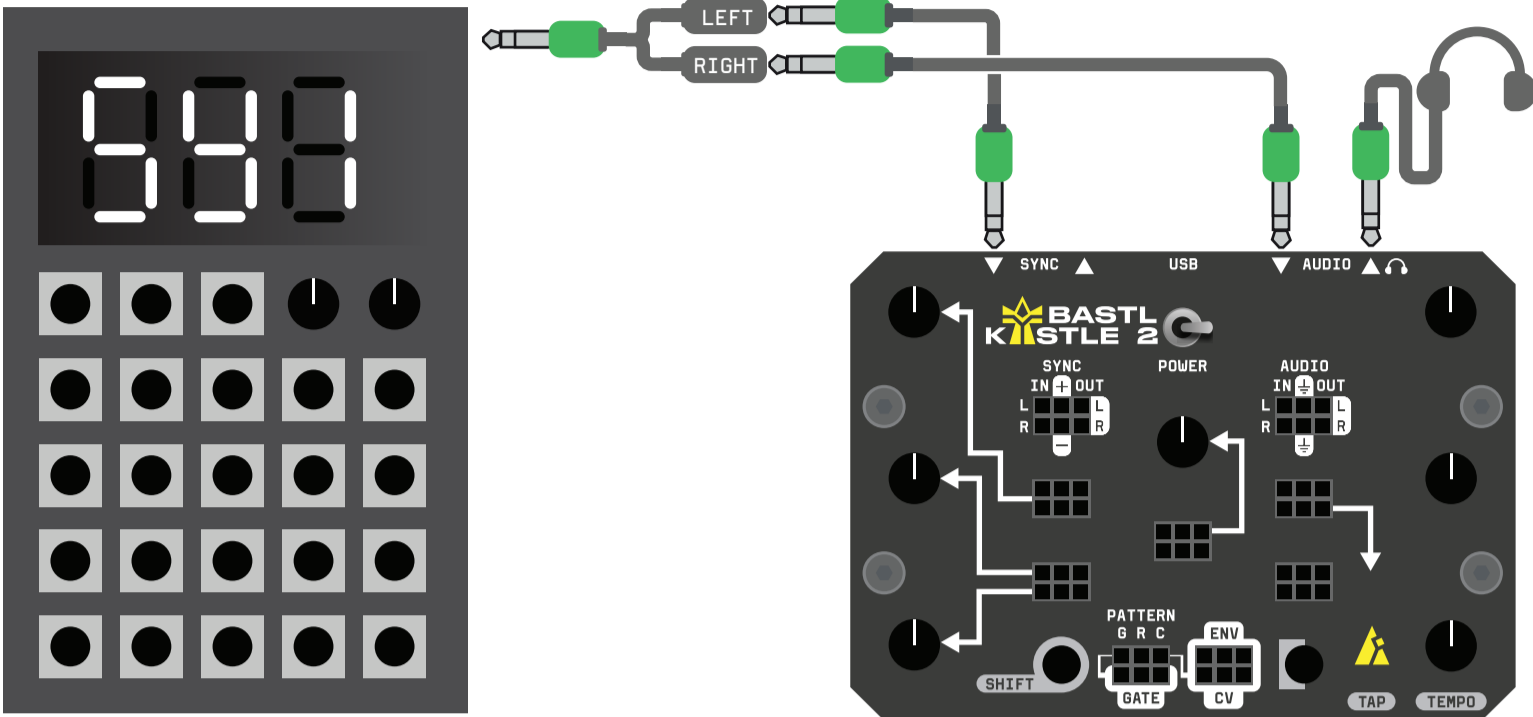
SET EXTERNAL TEMPO DIVIDER



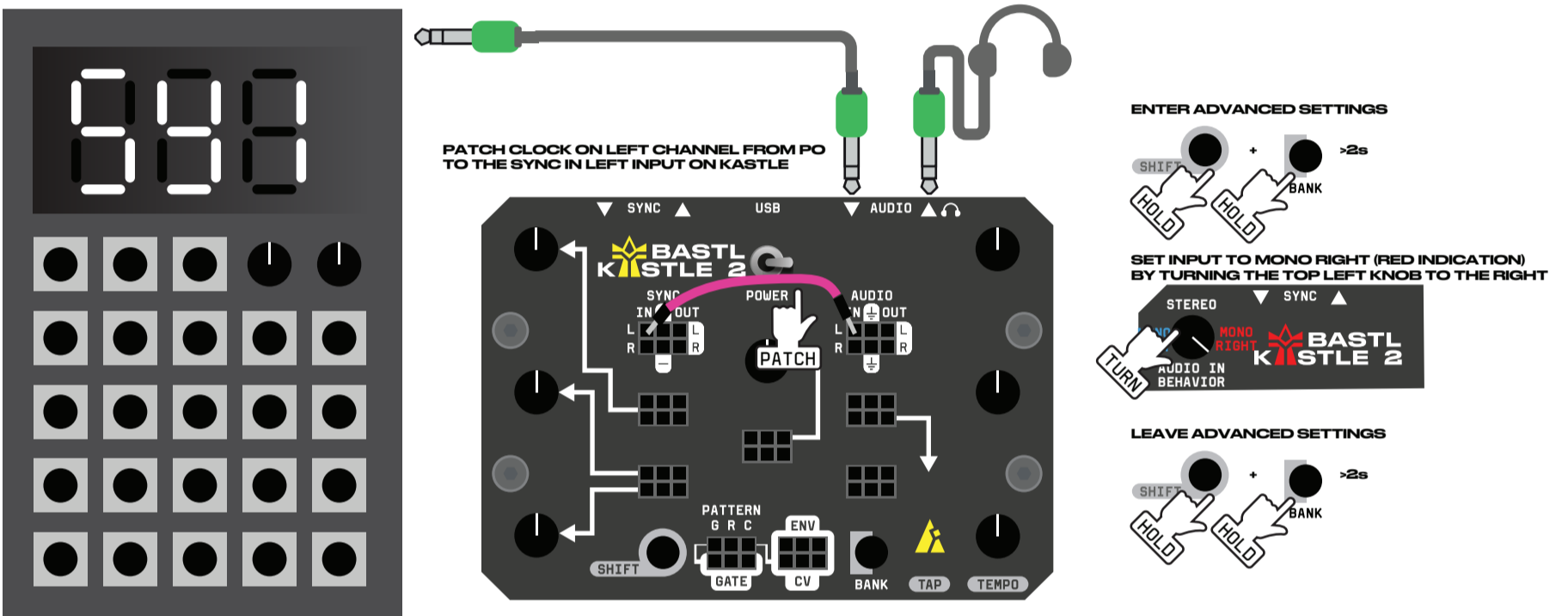
CHECK THAT EXTERNAL CLOCK IS DETECTED BY THE METRONOME LIGHT TURNING CYAN



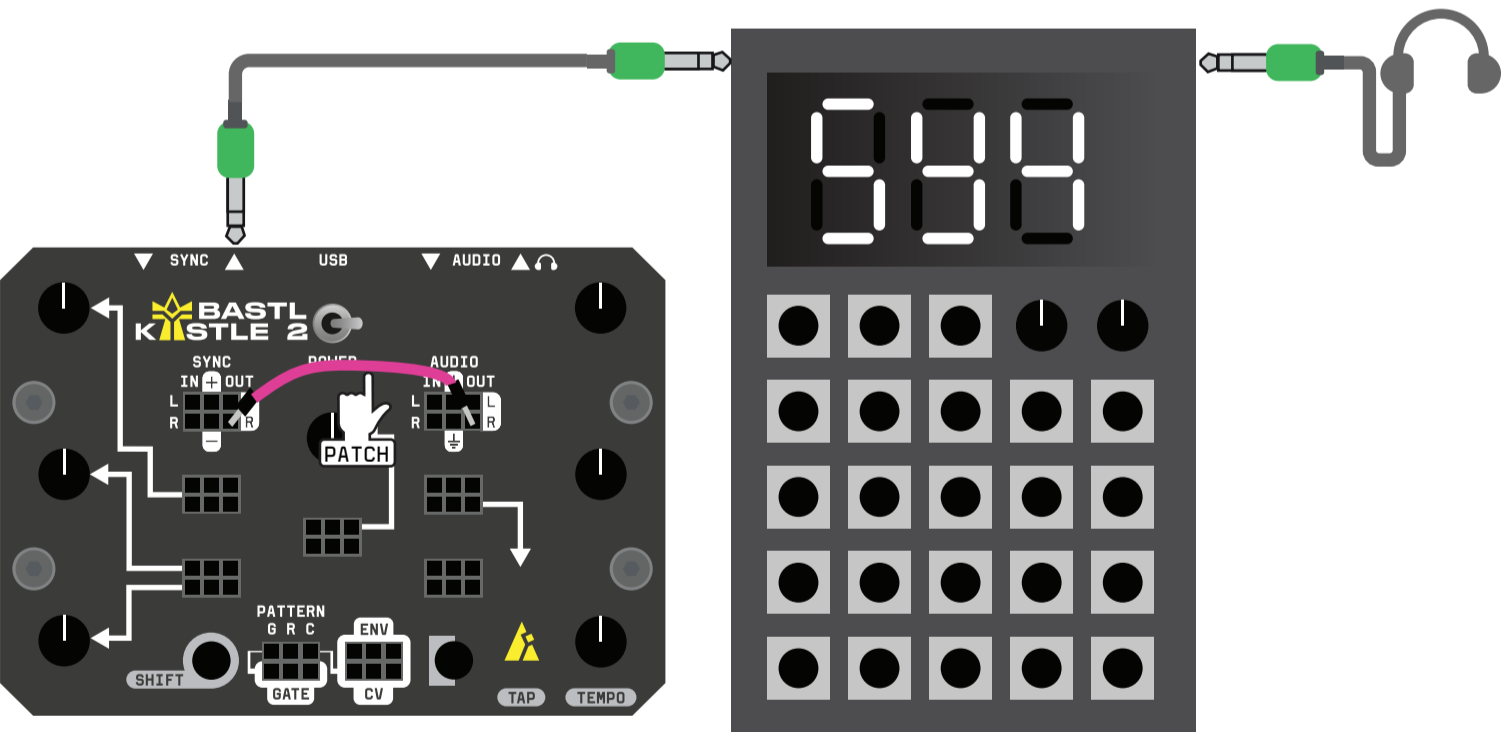
THE MOST TRANSPARENT METHOD IS TO GET STEREO TO LEFT/RIGHT SPLITTER CABLE AND CONNECT THE KASTLE 2 LIKE THIS
SET SYNC MODE ON THE PO TO SY1 BY HOLDING FUNCT AND PRESSING BPM



YOU CAN DO IT WITHOUT A SPLITTER CABLE WITH THE FOLLOWING PATCH AND CHOSING THE RIGHT MONO INPUT IN THE KASTLE 2 ADVANCED SETTINGS
SET SYNC MODE ON THE PO TO SY1 BY HOLDING FUNCT AND PRESSING BPM



IF YOU WANT THE PO TO FOLLOW THE KASTLE CLOCK, USE THE FOLLOWING SETUP, WHERE THE RIGHT CHANNEL IS USED TO SEND AUDIO
SET PO SYNC MODE TO SY4 BY HOLDING FUNCT AND PRESSING BPM



IF YOU WANT THE PO TO FOLLOW THE KASTLE CLOCK BUT STILL WANT TO PROCESS THE PO AUDIO THRU THE KASTLE FX CORE
SET SYNC MODE TO SY4 BY HOLDING FUNCT AND PRESSING BPM

